



euromarc[®]

So Quick. So Easy

Welding Safety Catalogue

Need it? We got it!

You're needing a solution to protect your welders and engineers against welding hazards and fumes?
Wanting greater clarity and vision? Want to breathe easy with fresh air? Need all day comfort when welding?

We've got the complete solution for you, Welding helmets, respirator systems, and other welding protection.
Exclusive agents for Tecmen, Weldclass & Euromarc Craftsman brands providing excellent quality products –
direct to you!

Our easy order system and next day delivery service takes the hassle out of your day. Yep, we know you want your
order quick... that's why we use rocket power to deliver nationwide throughout New Zealand.

Ok, not quite rockets - but it's super quick.

euromarc[®]
So Quick. So Easy



Content

TECMEN WELDING HELMET TM1000

Greater vision with Flip up

True colour lens, all day comfort

TM1000 Helmet with Respirator

TECMEN WELDING HELMET TM820

Lightweight, Best optical class Lens

TM820 Helmet with Respirator

TECMEN FREFLOW

Powered Air Purifying Respirator

SPECIFICATIONS AND PARTS ASSEMBLY

TECMEN Freeflow Respirator

TECMEN TM1000 Standard and Respirator

TECMEN TM820 Standard and Respirator

EXTRA WELDING PROTECTION

Craftsman Respirator

Weldclass Helmets

4



5



6



8

9



11



12

13

14

15



15





TECMEN Welding Helmet TM1000

Greater vision with Flip Up

Opening up a whole new vision to the welder's world!

Smooth flip-up function

Spring loaded for easy flip-up function and parked position.

Pivot headgear

Well balanced, and adjustable for max-comfort.

Side windows

Shade 5 lens on both sides, enhances surround vision for greater safety.

Superior lens technology

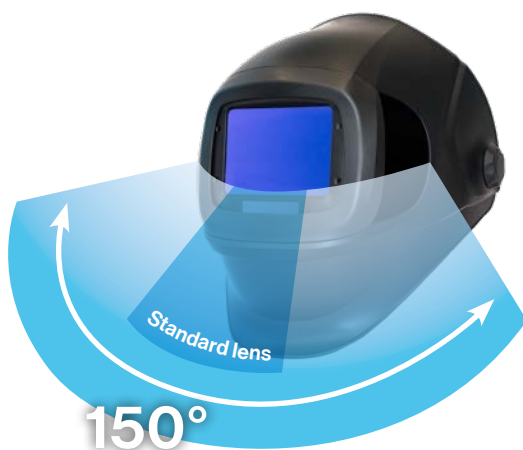
107 x 75mm Best optical class 1/1/1/1 Lens to bring true colour and clear vision to the welder.

Large grinding view

200x120mm curved and clear anti-fog lens.

High impact resistance

Australian and New Zealand standard AS/NZS 1337.1 compliant.



150° horizontal field of vision

Increased both safety and efficiency in your workplace, with a better field of vision.



Grinding mode

Now no time lost changing between welding and grinding, or back again. Just one easy flip-up action, no need to remove the helmet between jobs.



TECMEN Welding Helmet TM1000



True colour lens, all day comfort.

Highest clarity of vision when welding.

World's best optical rating 1/1/1/1

- 1 Optical class: No distortion.
- 1 Light diff vision: No double vision.
- 1 Homogeneity: No shade variation.
- 1 Angle dependence: Shade remains consistent when looking at any angle.

3 year lens warranty

Solar powered

with battery backup.
Automatic no-off so ready to weld at any time.



True colour lens

Bringing realistic colour to the welder's world. No more green environments with weak colour contrasts.

107x75mm

auto-darkening view
+ side windows

Easy lens controls

Weld shade adjustment 9-13.
Cutting shade adjustment 5-8.
Sensitivity adjustment 1-10.
Delay adjustment 1-10.

3 adjustable cram straps

To distribute weight and balance better.

Automatic self-adjust sweatband

To fit the head shape perfectly.



Swivelling padded headband

Self-adjust to any head shape with a smooth ratchet, to allow just the right tension for all day comfort wear.

Adjustable distance

between the face and helmet.
Easy to wear it the way you want it, with greater vision



Lightweight, robust
all day comfort headgear



TECMEN Welding Helmet TM1000 FREEFLOW PAPR

Cooler, cleaner, better productivity!

Combining the TM1000's great benefits with the powered air-purifying respirator for the ultimate productivity, safety and comfort.

Superior lens

Best optical lens 1/1/1/1
Best true colour and clear vision



Great field of vision

With side windows and a flip-up front for a large anti-fog grinding lens

User friendly indicator display

Filter status, airflow rate, battery capacity.



Flame resistant face seal to give the welder P3 protection for every shaped face.

Breathing hose connected to headgear to give the helmet balance. Keeps the hose secure and out of the way.

Intelligent air supply

Self-adjust air-flow rate according to the clogging of the filter or battery level.

Li-ion 1 hour quick charge battery to give up to 9 hours uninterrupted air-flow.

Adjustable airflow

170 lpm or 210 lpm airflow rates to provide the user better comfort, and cooling in hot or heavy workload conditions.



Designed air outlet

To distribute the airflow to the breathing zone, and around the face to keep the user cooler and keeps air away from eyes.



Comes with a large trade backpack to store and carry helmet and respirator unit. Extra storage department for spare lense and filters.

**Opening up a whole new
vision to the welder's world**





TECMEN Welding Helmet TM820

**Lightweight, Best optical class
1/1/1/1 with true colour.**



Intelligent arc sensor technology

Not affected by natural/surrounding light, stable outdoor performance.

Large 95x85mm viewing area

Aluminium heat shield

Reflects heat away from the welder and lens, for continuous high amp welding.

Superior lens technology

Best optical class 1/1/1/1 to bring true colour and clear vision to the welder.

1 Optical class: No distortion.

1 Light diff vision: No double vision.

1 Homogeneity: No shade variation.

1 Angle dependence: Shade remains consistent when looking at any angle.



External grinding control

Allows quick switching from welding to grinding and back without lifting the welding hood or removing gloves.

Multi point adjustable headgear

Well balanced design, maximum comfort level.

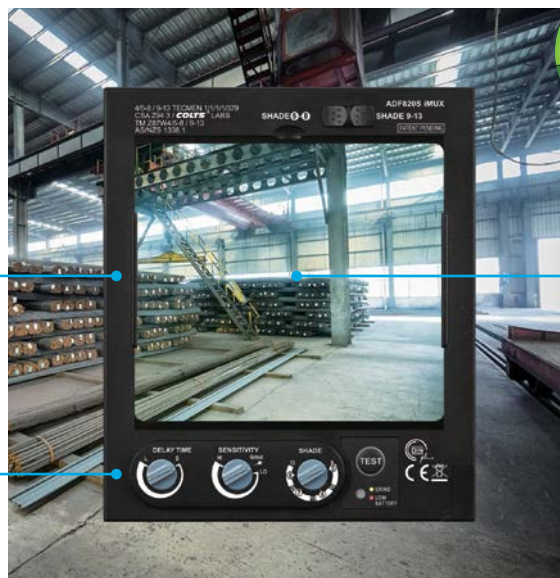
High impact resistance

Australian and New Zealand Standard AS/NZS 1337.1 compliant.

3 year auto-darkening lens warranty

Solar powered with battery backup. Automatic on/off, so ready to weld at any time. Low amperage TIG rated down to 2 amps.

Weld shade 9 - 13
Cutting shade 5 - 8
Sensitivity adjustment Lo - Hi
Delay adjustment Long - Short



True colour lens

Bringing realistic colour to the welder's world. No more green environment with weak colour contrasts.



TECMEN Welding Helmet TM820 FREFLOW PAPP

All the great benefits with the powered
air-purifying respirator.

External grinding control

Allows quick switching from welding to grinding and back without lifting the welding hood.

Light-weight helmet

95x85mm viewing area with 1/1/1/1 vision and true colour lens.

High impact resistance

AS/NZ1337.1 compliant.

Li-ion 1 hour quick charge battery

to give up to 9 hours uninterrupted air-flow.

Adjustable Air Outlet

to distribute the airflow closer or further from the face.

Adjustable airflow

170 lpm or 210 lpm airflow rates to provide the user better comfort, and cooling in hot or heavy workload conditions.

Flame resistant face seal

gives welders P3 protection for every shaped face.



Connects to Freflow PAPP

Compliant with high level respirator protection AS/NZS 1716:2012 standards.



Comes with a large trade

backpack to store and carry helmet and respirator unit. Extra storage department for spare lense and filters.

**Easy welding – Fresh air,
Lightweight, with true
welding clarity.**



TECMEN FREFLOW

Powered Air Purifying Respirator

High level respirator protection (AS/NZS 1716:2012).
Compact design with P3 class that provides clear air to metal fabricators.

Simple to operate

One button control on/off and adjust airflow.

Heavy duty belt

Can also be worn with shoulder straps.

2 Year Blower Unit Warranty

Air hose

connecting to helmet, comes with flame retardant cover.

Audio-visual and vibrating alarm

Indicates when battery charge and/or filter replacement is required.

Intelligent air supply

Self-adjust airflow rate according to the blockage of the filter.

Rechargeable Li-ion battery

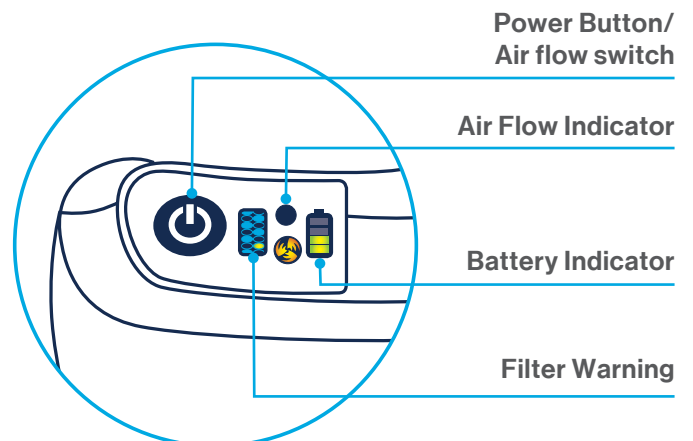
1 hour quick charge gives up to 9 hours of uninterrupted air-flow, with the best warranty in the market. 1 year warranty.



- 1 Filter cover and spark protector.
- 2 Pre-filter protects main filter from heavy dust.
- 3 P3 main filter 99.7% particle protection.
- 4 Blower unit intelligent self adjust airflow, robust design, 2 year warranty.
- 5 Adjustable airflow 170 lpm or 210 lpm rate to provide user better comfort and cooler in hot or heavy workload conditions.
- 6 Pure air to helmet via flame retardant covered air hose.

User-friendly LED indicator display

- Filter status, warning lights to indicate and show how dirty the filter is.
- Low speed airflow 170 lpm.
- High speed airflow 210 lpm.
- Battery indicator fully charged shows 4 bars. 1 bar left indicates ready for recharge and warning will start.
- One button to control power and airflow switch.



Power Button/
Air flow switch

Air Flow Indicator

Battery Indicator

Filter Warning



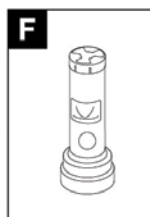
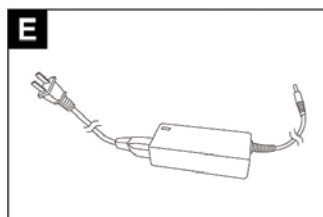
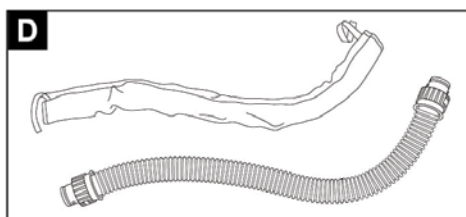
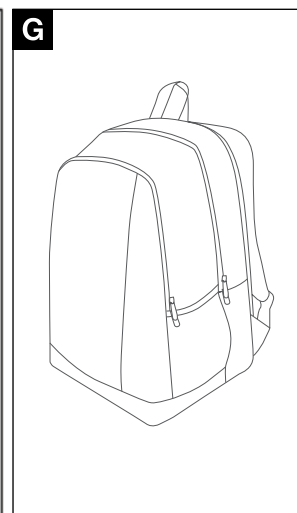
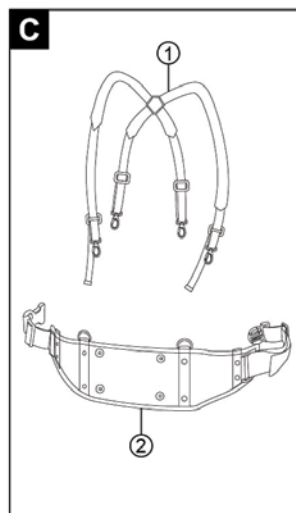
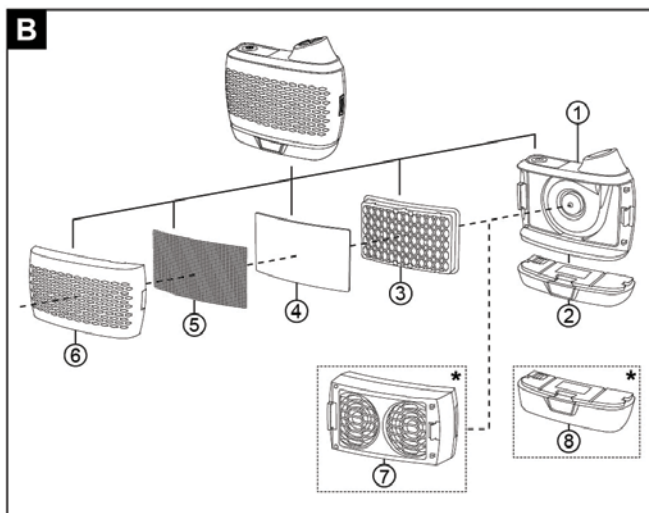
TECMEN FREEFLOW PAPR

Technical Data

| | | |
|---------------------------|---|--------------------------------------|
| Alarm Function | Visible, Audible and Vibrate alarms, indicate when battery is low, or/and filter replacement is required. | |
| Air flow rate | Self-adjusting airflow rate, to ensure constant flow rate regardless to clogging of the filter, or battery level. | |
| | Low speed: 170+ lpm (6+cfm) | |
| | High speed: 210+ lpm (7.4+cfm) | |
| Battery | Type: Rechargeable Li-ion Battery | |
| | Duration: 9 hours (Standard battery, 170 lpm) | (15 hours Extended battery, 170 lpm) |
| | 5-6 hours (Standard battery, 210 lpm) | |
| | Charge time: Standard battery 1 hour. | (2 hours Extended battery) |
| | Life: 550 charges. | |
| | Warranty: 1 year. | |
| P3 Filter | Efficiency: ≥99.97% | |
| | Offering particulate protection from dust and welding fume hazards. For use with all welding applications. | |
| Weight | Blower unit = 1020g Blower with belt/strap = 1650. | |
| Warranty | Blower unit 2 year. Battery 1 year. | |
| PAPR Certification | EN 12941 TH2 P R SL; NIOSH 42 CFR Part 84; AS/NZS 1716: 2012 | |

Spare Part and Accessories

| | | | |
|-------------------|-------------------------------------|-------------------|----------------------------|
| WSHWR95027 | B-1. Body | BELT | |
| WSHWR95026 | B-2. Fast-charging standard battery | WSHWR95038 | C-1. Shoulder Strap |
| WSHWR95022 | B-3. Particle Filter (P3 Filter) | WSHWR95037 | C-2. Heavy Duty Belt |
| WSHWR95020 | B-4. Pre-filter | HOSE | |
| WSHWR95023 | B-5. Spark Protection | WSHWR95034 | D - Complete Hose Assembly |
| WSHWR95024 | B-6. Filter Cover | AIR FLOW | |
| WSHWR95025 | B-7. Gas Filter ABEK1 | WSHWR95035 | F - Air Flow Meter |
| WSHWR95029 | B-8 Fast Charging Extended Battery | BACKPACK | |
| CHARGER | | MBTB | G - Large Trade Backpack |
| WSHWR95039 | E - Fast Charging Battery Charger | | |





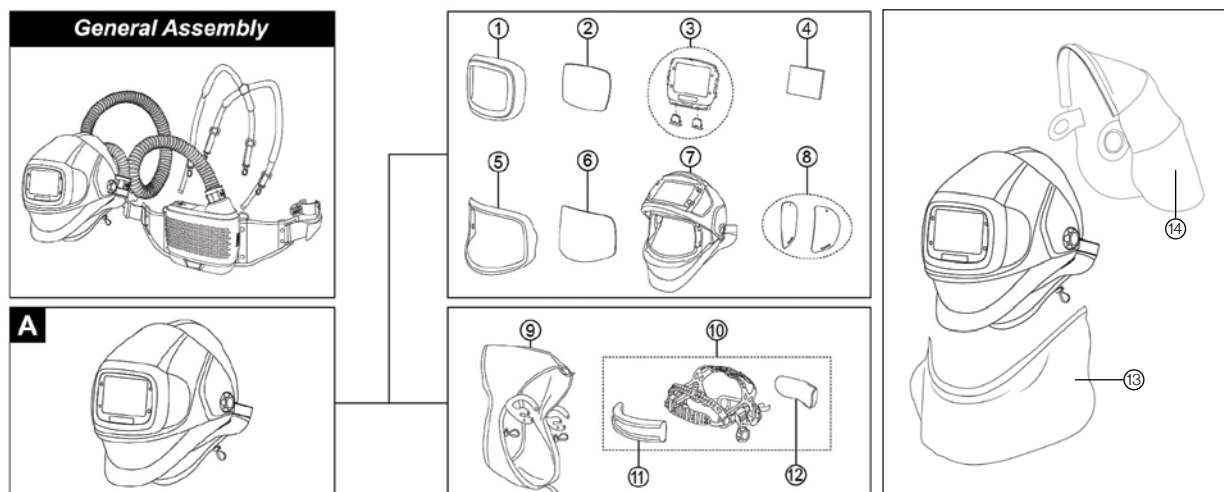
TECMEN TM1000 STANDARD & RESPIRATOR

Technical Data

| | |
|-----------------------------------|---|
| Optical Class | 1/1/1 highest optical class with high definition lens technology (EN379) |
| Viewing area | 107 x 75 mm |
| Lens shade | Variable Shade 5 - 8 / 9 - 13 |
| Light shade | 3 |
| Shade control | Internal, Digital Display Control |
| Sensors | 4 |
| On/Off | Manual-on / off, Auto-off |
| Power Supply | Solar cell, + Battery replaceable, 2 x CR2450 lithium battery |
| Switch time | 1/25,000 s. from Light to Dark |
| Sensitivity Control | Low - High, Digital Display Control |
| Delay time (dark to light) | 0.1 - 1.0 s, Digital Display Control |
| Low TIG rated | Down to 2 amps |
| Grind mode | Yes |
| Grind lens | 200x120mm |
| Side windows | Yes |
| Helmet weight | Standard Helmet 760g, Respiratory version 940g |
| Magnification Lens | Lens holder, to fit standard 108x51 magnification lenses |
| Operating Temperature | -5 °C to +55 °C |
| Storing Temperature | -10 °C to +55 °C |
| Application range | Stick Welding (DC&AC). TIG (DC,DC Pulse);TIG AC(Pulse),Excellent low amperage TIG response. MIG/MAG ;MIG/MAG Pulse;Plasma Cutting/ Welding. Grinding. Oxyacetylene Welding/Cutting. |
| Warranty | Auto Darking Lens: 3 years |
| Standards | Helmet: AS/NZS13371:2010 High impact rated Lens: AS/NZS1338, EN379 |

Spare Part and Accessories

| | | | |
|-------------------|-------------------------------------|-------------------|--------------------------------------|
| WSHWR95007 | 1 - TM1000 Front lens holder | WSHWR95018 | 7 - TM1000 Helmet shell with airflow |
| WSHWR95003 | 2 - Outside cover lens | WSHWR95013 | 8 - TM1000 Side lens cover |
| WSHWR95002 | 2 - H/D Heat Outside cover lens | WSHWR95016 | 9 - TM1000 Face seal |
| WSHWR95012 | 3 - Auto darkening filter (ADF950S) | WSHWR95014 | 10 - TM1000 Headgear (non-air) |
| WSHWR95004 | 4 - 950S Inside cover lens | WSHWR95015 | 10 - TM1000 Headgear for air |
| WSHWR95008 | 5 - TM1000 Grind lens holder | WSHWR95006 | 11/12 - TM1000 Sweatbands |
| WSHWR95005 | 6 - TM1000 Grind lens(anti-fog) | WSHWR95040 | 13 - Front Leather Throat protection |
| WSHWR95017 | 7 - TM1000 Helmet shell (non-air) | WSHWR95041 | 14 - Back Hood cover protection |





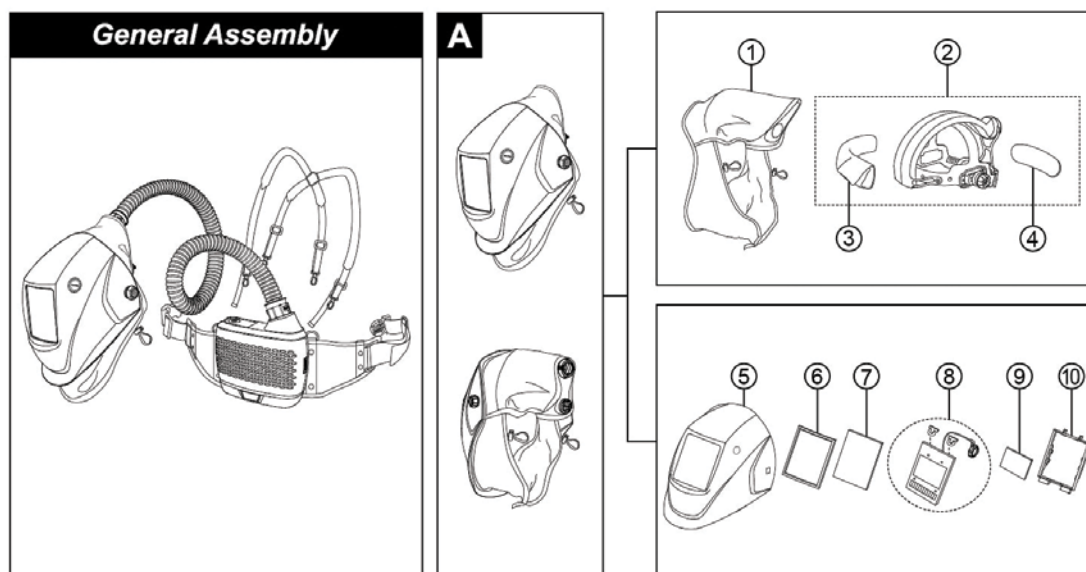
TECMEN TM820 STANDARD & RESPIRATOR

Technical Data

| | | |
|-----------------------------------|--|--------------------------------|
| Optical Class | 1/1/1/1 highest optical class with high definition lens technology (EN379) | |
| Viewing area | 95 x 85mm | |
| Lens shade | Variable Shade 5-8 / 9-13 | |
| Light State | DIN 3.5 | |
| Shade control | Internal | |
| Sensors | 4 | |
| On/Off | Automatic On / Off | |
| Power Supply | Solar cell + Battery replaceable, 1*CR2450 lithium battery | |
| Switch time | 1/25,000 s. from Light to Dark | |
| Sensitivity Control | Low-High, by infinite dial knob | |
| Delay time (dark to light) | 0.1-1.0s by infinite dial knob | |
| Low TIG amps rated | 2 amps | |
| Grind mode | Yes, External grinding button | |
| Helmet weight | Standard Helmet 645g, Respiratory version 880g | |
| Magnification Lens | Lens holder, to fit standard 108x51 magnification lenses | |
| Operating Temperature | -10°C to +55°C | |
| Storing Temperature | -20°C to +70°C | |
| Application range | Stick Welding (DC&AC). TIG (DC,DC Pulse);TIG AC(Pulse),Excellent low amperage TIG response. MIG/MAG; MIG/MAG Pulse. Plasma Cutting/ Welding; Grinding; Oxyacetylene Welding/Cutting; | |
| Warranty | 3 years Auto Darkening Lens | |
| Standards | Helmet: AS/NZS1337.1:2010 High impact rated | Lens: AS/NZS1338, EN379 |

Spare Part and Accessories

| | | | |
|-------------------|----------------------------------|-------------------|------------------------------------|
| WSHWR82016 | 1 - Face seal | WSHWR82003 | 7 - Outside cover lens |
| WSHWR82015 | 2 - Headgear with air connection | WSHWR82002 | 7 - H/D Heat Outside cover lens |
| WSHWR82014 | 2 - Headgear (non-air) | WSHWR82012 | 8 - Auto darkening filter (ADF820) |
| WSHWR82006 | 3/4 - Sweatbands | WSHWR82004 | 9 - Inside cover lens |
| WSHWR82017 | 5 - Helmet shell | WSHWR82008 | 10 - Lens Holder |
| WSHWR82007 | 6 - rubber frame | | |



EXTRA WELDING PROTECTION

euromarc®
CRAFTSMAN
 HALF FACE RESPIRATOR **710**

- Half face advanced soft silicon mask - Smoother feel and more flexible to conform to the face. Providing better seal and comfort.
- Low profile design – For better view and use under welding helmets!
- Mask; Small **WSMFC71007**, Med **WSMFC71008**, Large **WSMFC71009**.
- Welder's Kit; Small **WSMFC7107W**, Med **WSMFC7108W**, Large **WSMFC7109W**.



Particulate Filter GP3 718

- Particulate protection class P3, and nuisance level organic vapours and acid gases.
- Dust and fumes from grinding, polishing and welding.
- Certified to AS/NZS 1716:2012. **WSMFPPC718**.



**Blue Hood
 Velcro Opening**

- Lightweight, cool, flame resistant cotton.
- Velcro opening, easy to wear.
- Sewn with Kevlar. **WSLCHX0100**.



**Hood
 Fits with Velcro**

- Protects head and neck from spatter and debris. Blocks out light entering the back of helmet.
- Sewn with Kevlar.
- Easily fit -using self-stick Velcro supplied. **WSLCHX0200**.



Promax 350

- Ideal for MIG & Stick Welding, also suits TIG applications down to 30 amps.
- Viewing area 100x53mm, Optical rating 1/1/1/2.
- 4 Sensors, for reliable arc deflection and switching.
- Reliable power source: Replaceable battery, plus solar assist.
- Shade adjustable 9-13 with sensitivity and delay.
- Grind mode.
- 2 year warranty. **WSHWX00351**.



Promax 500

- Ideal for TIG down to 5 amp, MIG, Stick welding applications.
- Super-size viewing - 98 x 87mm, Optical rating 1/1/1/2.
- 4 Arc Sensors, for reliable arc deflection and switching.
- Reliable power source: Replaceable battery, plus solar assist.
- Shade adjustable 9-13 with sensitivity and delay.
- Grind mode.
- 2 year warranty. **WSHWX00501**.





euromarc[®]
So Quick. So Easy

0800 278 600
sales@euromarc.co.nz
euromarc.co.nz

Euromarc endeavours to ensure that the information presented in this publication is accurate and current. However, we do not accept any liability for errors, omissions, or outdated content. Euromarc reserves the right to alter specifications, components, design and prices, at their discretion and without notice. Other conditions may apply. All material and information presented in this publication is copyright 2018 Euromarc Industries Limited. All rights reserved.